



# The Leopard Link



## Winners!

Congratulations to all the students that participated in the 2017-2018 PTA Art Reflections program. This year we had 43 entries in the following categories: Visual Arts, Film Production, Literature, and Photography. We look forward to having even more students participate next year.

Special recognition to the following students. (Honorable Mention abbreviated HM). All of these students represented Lead Mine at the county level.

### K-2nd Visual Arts 2D

- 1<sup>st</sup> Miri Burton
- 2<sup>nd</sup> Amelia Kearse
- 3<sup>rd</sup> Brynn Cretarolo
- HM Morgan Bullard
- HM Gianna Jones
- HM Hadley Turner

### 3<sup>rd</sup> -5th Visual Arts 2D

- 1<sup>st</sup> Annaliese Hatlestad
- 2<sup>nd</sup> Anna Patterson
- 3<sup>rd</sup> Kaniyah Sylla
- HM Lily Bendell
- HM Cody Bullard

### Film Production

- 1<sup>st</sup> Kai Preddy
- 2<sup>nd</sup> Langdon Williams
- 3<sup>rd</sup> Dayla Burton

### Photography

- 1<sup>st</sup> Eli Lane
- 2<sup>nd</sup> Caroline Williams
- 3<sup>rd</sup> Tyler Erickson
- HM Scott Morden

### K-2 Literature

- 1<sup>st</sup> Arlette Montoya
- 2<sup>nd</sup> Amelia Kearse
- 3<sup>rd</sup> Fernanda Lopez Analco

### 3-5 Literature

- 1<sup>st</sup> Tucker Richie
- 2<sup>nd</sup> Samantha Shedd
- 3<sup>rd</sup> Olivia Ewing

### Calendar of Events

- 4/13  
Report Cards Coming Home  
Fitness Friday Club
- 4/17  
4:30-7:30 McTeacher Night
- 4/20  
8:30 AM PTA Meeting  
Quarter 3 P2 Assembly  
Fitness Friday Club
- 4/24  
5:30 Kindergarten Open House
- 4/27  
Fitness Friday  
5:00-8:30 PM Spring Carnival
- 5/3  
5:30 PM Science Fair
- 5/4  
Fitness Friday Club  
Jump Rope Assemblies:  
1:20-2:00 PM K, 2nd, 3rd  
2:10-2:50 PM 1st, 4th, 5th
- 5/9  
Walk to School Day  
6-6:45 FNO at Master Chang's
- 5/7-5/11  
Staff Appreciation Week
- 5/11  
Fitness Friday Club
- 5/18  
Fitness Friday Club
- 5/24  
7:00PM PTA Meeting
- 5/28  
No School-Memorial Day
- 5/29-6/4  
EOG TESTING
- 6/1  
Fitness Friday Club



**Lead Mine also had one county winner.**  
**Dayla Burton won 3<sup>rd</sup> place in Film Production!**  
**Congratulations!**

**Editor's Note:** *The Leopard Link* is published weekly by the Lead Mine PTA. The purpose of this newsletter is to communicate pertinent school, PTA, and education-related information to the Lead Mine community. Advertisements and solicitations from local and corporate businesses will not be accepted. **The submission deadline for content is each THURSDAY at 12 PM for the following week's issue.** Please e-mail newsletter submissions to [theleopardlink@gmail.com](mailto:theleopardlink@gmail.com). Sign up to receive this newsletter electronically by e-mailing [bonniebendell@hotmail.com](mailto:bonniebendell@hotmail.com). Thank you! ~ *The Leopard Link* Editor: Tricia Lane.



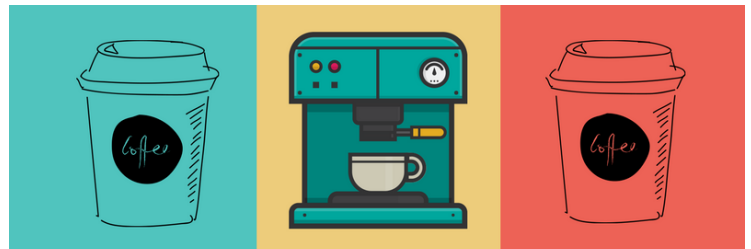
# Spots of Thanks go to...



...Melissa Shedd for organizing such a nice reception for our Reflections winners.  
...Everyone who contributed in our tumbler fundraiser!



April, 17th From 4:30 - 7:30pm, 7301 Six Forks Road



COFFEE CHATS WITH WCPSS DISTRICT 7 BOARD  
MEMBER KATHY HARTENSTINE

## KATHY CHATS

NO AGENDA - ASK QUESTIONS, GET CLARIFICATION,  
SHARE IDEAS AND CONCERNS

<p><b>MORRISVILLE:</b> Common Grounds Coffee House 1000 Perimeter Park Dr</p> <p><b>DATES:</b> 2/15 3/15 4/27 5/31</p>	<p>Each Event will be 10am until 11am</p>	<p><b>NORTH RALEIGH:</b> Maude's Garden &amp; Coffee 12333 Strickland Rd</p> <p><b>DATES:</b> 2/8 3/2 4/19 5/17</p>
--	---	---



We're excited to announce the launch of a composting program at Lead Mine Elementary! Students will be able to start composting their food scraps and paper products at lunch time, starting **April 9th!** [CompostNow \(https://compostnow.org/\)](https://compostnow.org/) will come each week to collect our carts and replace them with clean ones!

**What's compostable?** A lot! CompostNow can accept any food (including meats, bones, and dairy), coffee grounds / filters, tea bags (just remove the staple!), any soiled paper or cardboard, pizza boxes and much more. [Learn more here: https://compostnow.org/compostables/](https://compostnow.org/compostables/)

"If it grows, it goes!" "When in doubt, throw it out!"

**What happens to the compostables?** They are processed at a local commercial composting facility, which turns all that waste into compost! The compost we create will be shared with CompostNow's network of community gardens. (Check them out here: <https://compostnow.org/garden-partners/>). Our school will also receive compost for our school garden!

**Want to compost at home too?** CompostNow has a home collection service. Everyone at Lead Mine can get started with a free two-week trial at <https://compostnow.org/offer/leadmine/>



FOLLOW US ON TWITTER!

@Lead\_Mine\_PTA

GET TO KNOW US AT

<http://leadminepta.weebly.com/>

"LIKE" US ON **facebook**

[www.facebook.com/LeadMineElementaryPTA](http://www.facebook.com/LeadMineElementaryPTA)