



# The Leopard Link

## PRINCIPAL'S CORNER

Good Afternoon Lead Mine Leaders and Learners!

We hope that everyone is doing well and staying healthy as the temperatures bounce from warm, to cold, to cool, and back to warm. We appreciate so many families ensuring that students are dressed appropriately for learning, and playing with such varying temperatures.

It has been wonderful to see so many students and families participating in conferences following the close of our first quarter of the school year. Please let your child's teacher know if you have not yet received an invitation to conference and we will be sure to get one to you as soon as possible.

While families have been coming in to conference, we have also seen and would like to recognize the number of families who are finding ways to volunteer and serve our school community the best way their schedules will allow. Our Media Center has appreciated the number of folks coming in to shelve books, cover and bind new titles, and to support student check-out.

Our 5<sup>th</sup> Grade students have had the pleasure of working with an "Artist in Residence" this week as they work to create their 5<sup>th</sup> grade legacy project. Students have been working with two local artists to sketch, mold, and create life sized birds that will be put on permanent display once they are completed. We are appreciative of our PTA and the United Arts Council for making this experience come to life.

As we prepare to close out the calendar year of 2018 – we will have an early release on Friday, December 21<sup>st</sup>. Students will be dismissed at 12:30 PM that afternoon.

If you have not yet had the opportunity to see your child using Dreambox learning at home, we highly encourage you to do so. Students have access to Dreambox 24 hours a day, 7 days a week, 365 days a year. If your child is anything like ours – you cannot keep them off the app once they discover they can play/learn at home.

Dreambox not only supports and reinforces the standards that students are learning in school each week, it is highly personalized for each user and supports children in their learning and mastery of basic foundational math skills first. As we enter our third year of using Dreambox we have collected data to show how much students are growing in their mastery of math standards and grade level content.

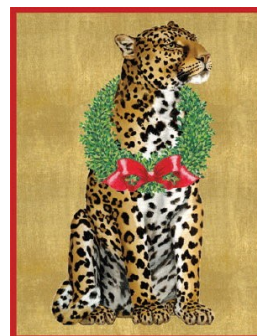
As each student uses Dreambox, we at the school are able to determine where any misunderstandings may lie and work to address specific and targeted misunderstandings to increase the child's ability to learn and grow at high rates.

To login at home – please see the attached form with detailed instructions for logging in from a home computer, or downloading the app.

Wishing you well,

*T. Aaron Marcia*

Lead Learner/Principal  
Lead Mine Elementary



## Calendar of Events

- 12/12**  
Holiday Shop starts
- 12/19**  
Holiday Shop ends
- 12/20**  
5:15-7:30 PM FNO:  
Holiday Drop N' Shop at  
Coconut Charlie's
- 12/21**  
12:30 EARLY RELEASE  
Spirit Day-Holiday Fun  
Staff Holiday Luncheon
- 12/24-1/2**  
Winter Break
- 1/8**  
6:30 PM PTA Meeting
- 1/17**  
Spirit Day: Crazy Hair Day
- 1/18**  
NO SCHOOL-Teacher Work-  
day
- 1/21**  
NO SCHOOL-MLK Day
- 2/1**  
Book Fair begins
- 2/5**  
5-7 PM Book Fair Family  
Night
- 2/9**  
2:00 PM Writing Contest-  
Barnes and Noble at Triangle  
Towne Center
- 2/15**  
8:30 AM PTA Meeting  
12:30 Early Release  
Spirit Day: Rainbow Day
- 2/18 and 2/19**  
NO SCHOOL:Teacher Work-  
day

**Editor's Note:** *The Leopard Link* is published weekly by the Lead Mine PTA. The purpose of this newsletter is to communicate pertinent school, PTA, and education-related information to the Lead Mine community. Advertisements and solicitations from local and corporate businesses will not be accepted. **The submission deadline for content is each THURSDAY at 12 PM for the following week's issue.** Please e-mail newsletter submissions to [theleopardlink@gmail.com](mailto:theleopardlink@gmail.com). Sign up to receive this newsletter electronically by e-mailing [bonniebendell@hotmail.com](mailto:bonniebendell@hotmail.com). Thank you! ~ *The Leopard Link* Editor: Tricia Lane.



**Spots of Thanks go to...**



...Jennifer Heard for organizing our 5th grade Artist in Residence.


## Future Carroll Magnet Middle School Students!

Register for a tour of Carroll Magnet Middle School at [https://docs.google.com/forms/d/e/1FAIpQLSeQvtq8XuMA-6om9QSxkJvG5Dz\\_rk9BSNHxgdH1OY3e8uCSRA/viewform](https://docs.google.com/forms/d/e/1FAIpQLSeQvtq8XuMA-6om9QSxkJvG5Dz_rk9BSNHxgdH1OY3e8uCSRA/viewform)

Tour Dates: Dec. 12&19  
Jan. 8, 16, 24, 29  
All tours are at 8:00am.



# BUY A YEAR BOOK YOU MUST

Dear Parent/Guardian,

Your child's school has purchased DreamBox Learning, a K-8 digital math program that independent studies have found to raise student achievement and better prepare children for future success.

**To Access DreamBox on a Browser**  
Your student can access DreamBox Learning from any computer, 24 hours a day, 7 days a week. All you need is a high-speed internet connection.

If you're using a browser, use this link: <https://play.dreambox.com/login/zhfd/58pq>

**To Access DreamBox on an iPad**  
To download the DreamBox Learning Math app, go to <https://www.dreambox.com/ipad>, or search for "DreamBox Learning Math" in the App Store. If you already have the app installed, you'll want to make sure the latest version of the app has been installed so your student receives the most current experience and lessons.

When prompted in the app, enter this school code: zhfd/58pq

**Create your DreamBox Account to review your student's academic progress at home in your Family Dashboard. Please follow these steps to create your free account:**

1. You will need your child's DreamBox school login information from their teacher to login for the first time.
2. Have your student login to their profile just as they would at school.
3. Click **Setup Parent Access** at the bottom of the page.
4. Follow the instructions provided to create a new login and password.
5. Read **Terms of Use and Privacy Policy**.
6. Click "Submit".

**Log into your home account after setup:**

1. Go to <https://play.dreambox.com>
2. Enter your email address and password.
3. To see student progress, click the "Family Dashboard" button.

If you have any questions, please contact DreamBox Support by calling them at 877-451-7845 (weekdays 5 a.m. to 5 p.m., Pacific Time), or emailing [support@dreambox.com](mailto:support@dreambox.com).

**NOTE:** The DreamBox Support team is unable to provide your child's login information and password for security reasons. Please reach out to your child's teacher directly for their DreamBox login information.

Sincerely,  
Lead Mine Elementary

## YEARBOOKS ON SALE NOW !

Yearbooks include the option for you to create **2 FREE** customized pages



To order a yearbook and to upload all of those **AMAZING** pictures you've been taking all year:

1. Go to [www.treering.com](http://www.treering.com)
2. Enter Lead Mine's passcode:  
1015043028522617



FOLLOW US ON TWITTER!

@Lead\_Mine\_PTA

GET TO KNOW US AT

<http://leadminepta.weebly.com/>

"LIKE" US ON

facebook

[www.facebook.com/LeadMineElementaryPTA](http://www.facebook.com/LeadMineElementaryPTA)

THURSDAY, DECEMBER 20TH 5:15PM-7:30PM

LEAD MINE'S  
**HOLIDAY**  
DROP N'  
SHOP!

GO SHOP  
WITHOUT  
THE KIDS,  
OR JUST A  
NIGHT OUT  
TO DINNER



3 YRS+ \$10 : INCLUDES : HOURS OF  
UNDER 3YRS : PIZZA/DRINK : BOUNCING  
\$5

**Holiday  
Hugs  
Parent  
Sponsors:**



Please be on the lookout for your instructions and wish lists. Drop off will be December 17th from 8:30-3:30 in the AIG/ESL cottage at the back of the school. Thank you for your generosity and sponsorship.

Please email all questions to [kcarroll2@wcpss.net](mailto:kcarroll2@wcpss.net)

## Staff Holiday Luncheon

It's the most wonderful time of the year-the annual staff holiday luncheon! The PTA needs your help -we will cooking and serving the staff an amazing lunch on Friday December 21. We have a parent volunteer who will cook the food outside Lead Mine that morning. We also had a gracious donation from Gladwell Orthodontics in Raleigh, who will be providing desserts and drinks.

Please view the sign up genius to see how you can help! The cash donations will be used to purchase the meat that will be cooked that day. Please label all donations with "PTA Luncheon" and make any checks out to Lead Mine PTA. Please send in any cash/checks by Tuesday December 18. All other items can be turned in to the staff lounge by 9 AM on December 21. A volunteer will be in carpool that morning to collect items as well.

Thank you!

<https://www.signupgenius.com/go/60B0E44AAA628A6FA7-staff>



FOLLOW US ON TWITTER!

@Lead\_Mine\_PTA

GET TO KNOW US AT

<http://leadminepta.weebly.com/>

"LIKE" US ON

facebook

[www.facebook.com/LeadMineElementaryPTA](http://www.facebook.com/LeadMineElementaryPTA)



**Lead Mine Elementary PTA presents  
Reindeer Lane Gift Shop  
December 12-19**

The holidays are coming, and we want to help make the season even more special for your children by giving them the opportunity to shop (in secret!) for the perfect gift for Mom, Dad, grandparents, siblings, and other important people (and pets!) in their lives. Every morning from 8-8:25 am, students will be able to choose from a wide array of gifts that range in price from \$.25 to \$20.00.

A "Gift List" budget envelope will be sent home this week. Please fill it out and return it, along with cash or check (made payable to Lead Mine Elementary PTA), when your child would like to shop in the Reindeer Lane Gift Shop®. You may also purchase a gift voucher at [www.Reindeerlane.com](http://www.Reindeerlane.com) for your child to use for purchasing gifts.

We need a lot of volunteers to help the children shop so please consider helping with this fun event. Sign up on the Lead Mine volunteer page:

[www.bit.ly/LMEVolunteering](http://www.bit.ly/LMEVolunteering)

**Any questions?**

Please call or email Leisa Glantz ([leisaglantz@gmail.com](mailto:leisaglantz@gmail.com), 919-523-9895).



**UPCOMING  
EVENTS**

There is now a page on the Lead Mine Elementary Web site that lists all opportunities for volunteering at Lead Mine! You can access the page by going to the Lead Mine Web Site and selecting the Parents tab, then Volunteer Opportunities. Or you can go directly to the page by visiting [www.bit.ly/LMEVolunteering](http://www.bit.ly/LMEVolunteering).

Keep up with upcoming events by using the link below to subscribe to the Lead Mine PTA Calendar of Events.

<https://calendar.google.com/calendar/ical/lmesraleigh%40gmail.com/private-9d760e7a79f8243e12e2c453fle9f819/basic.ics>



FOLLOW US ON TWITTER!

[@Lead\\_Mine\\_PTA](https://twitter.com/Lead_Mine_PTA)

GET TO KNOW US AT

<http://leadminepta.weebly.com/>

"LIKE" US ON

**facebook**

[www.facebook.com/LeadMineElementaryPTA](http://www.facebook.com/LeadMineElementaryPTA)